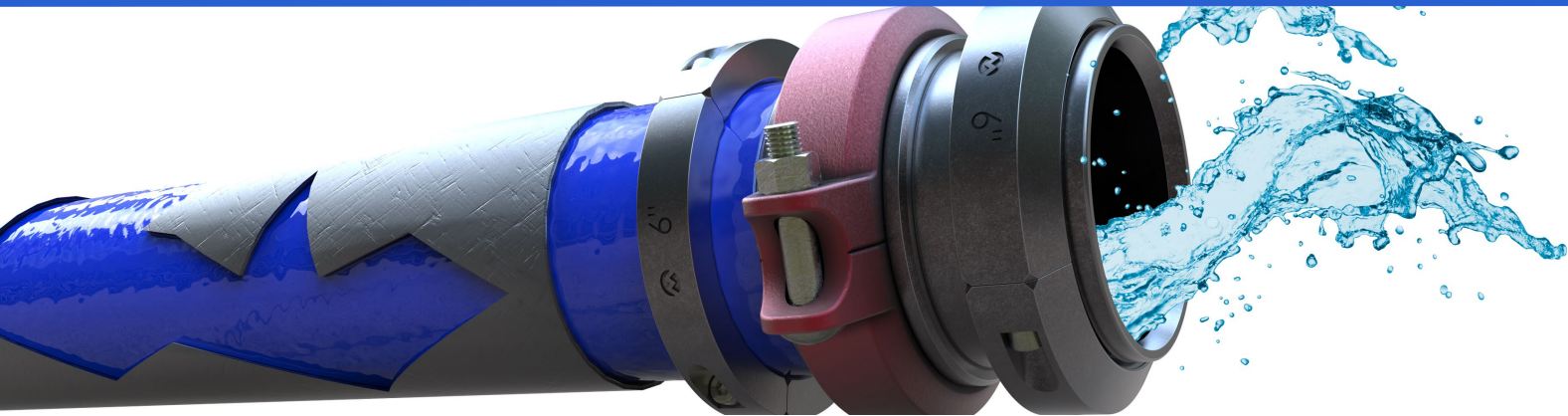


OROFLEX™ RELINE



Extruded TPU Lay Flat Hose for Pipe Rehabilitation



Specially Designed for Drinking Water Transfer in Trenchless Pipe Network Repair

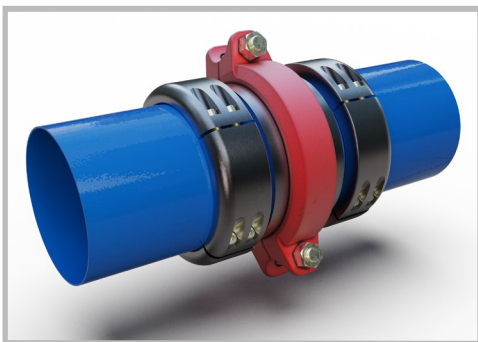
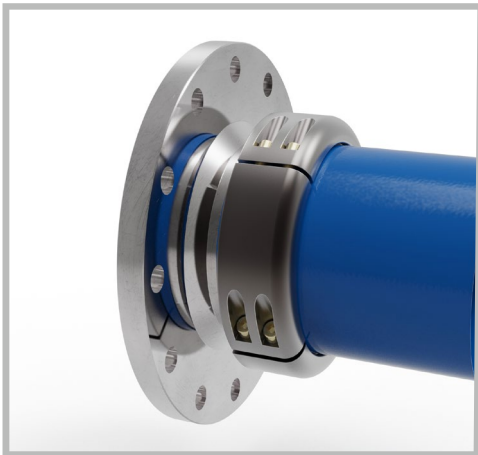
Premium & Flexible Leak Free Hose Adaptable to the Pipe Nominal Diameter

Total Corrosion Resistance
Ease of Transportation and Handling

Fully Approved for Potable Water - NSF/ANSI/CAN Standard 61 Certified - BS 6920:2014 Compliant

Color:

- Blue cover is the standard. Other colors are available upon request.



Applications:

Designed for water pipe network rehabilitation. This thermoplastic polyurethane (TPU) coated hose is manufactured in diameters ranging from 4" (DN125) to 20" (DN500). Its ease of expansion helps to adapt perfectly to the internal walls of the pipe to be repaired, providing an excellent wear resistance and an outstanding resistance to hydrolysis and microbiological attack.

Construction:

Made from circularly woven 100% high tenacity synthetic yarn, completely protected and locked-in by a tough, highly resistant thermoplastic polyurethane extruded through the weave, forming a single homogenous construction without the use of glues or adhesives. Its construction does not permit corrosion or scaling, while giving a high resistance against abrasion and cutting. Easy handling, storage & transport, which allows for fast installation. 2% maximum hose elongation and 10% maximum hose expansion.

Abrasion Resistance:

The OROFLEX RELINE hose will extend the lifetime of your application when under extreme conditions, where abrasion is the main concern. Under practical conditions, thermoplastic polyurethane is considered to be the most abrasion resistant elastomeric material.

Lining Properties:

- Ultimate Tensile Strength of the lining: Minimum guaranteed value of 5,800 psi (40 MPa).
- Ultimate Elongation: 500% minimum

Service Temperature Range:

From -58°F (-50°C) to 150°F (65°C), with peaks of up to 175°F (80°C). Special versions for higher and lower temperatures available upon request.

Structural Strength:

The OROFLEX RELINE hose ensures continuous water supply even if the main pipe breaks.

Chemical Resistance:

Exposure to seawater and contamination by most chemical substances, hydrocarbons, oils and greases has no effect on the short or long term performance of the hose. A chemical resistance chart is available and TIPSA will supply specific chemical resistance data when requested for unique applications.

Recommended Operating PH Range:

4 to 9 below 86°F (30°C) and 5 to 9 from 86°F to 122°F (from 30°C to 50°C).

Lengths:

Standard lengths in 660ft (200m). Longer lengths may be available according to project needs.

Couplings:

As requested by the customer; Victaulic, flange connection, etc.

Extruded TPU Lay Flat Hose for Pipe Rehabilitation

Physical Properties:

Nominal Pipe Size		OROFLEX [®] RELINE Hose Properties												
		Part Number	Inner Diameter		Wall Thickness		Working Pressure		Burst Pressure		Tensile Strength		Nominal Weight	
inch	DN - mm		inch	mm	inch	mm	psi	bar	psi	bar	lb	kg	lb/ft	kg/m
5	125	F550170A	3 ½	92	0.154	3.9	245	17	600	42	28,600	13,000	0.97	1.45
6	150	F550171A	4 ½	116	0.154	3.9	230	16	500	35	39,700	18,000	1.08	1.60
8	200	F550172A	6	152	0.177	4.5	320	22	800	55	63,900	29,000	1.66	2.48
10	250	F550173A	8	203	0.169	4.3	230	16	600	42	77,200	35,000	2.22	3.30
12	300	F550174A	10	254	0.177	4.5	230	16	500	35	99,200	45,000	2.80	4.10
16	400	F550175A	12	305	0.197	5.0	230	16	500	35	154,300	70,000	3.55	5.28
20	500	F550176A	16	406	0.205	5.2	215	14	400	28	176,400	80,000	5.11	7.60

There are other versions available with different working pressures

Nominal Pipe Size		OROFLEX [®] RELINE Hose Properties												
		Part Number	Inner Diameter		Outer Diameter									
inch	DN - mm				inch	mm	at 10psi	at 0,7bar	at 145psi	at 10bar	at 175psi	at 12bar	at 200psi	at 14bar
5	125	F550170A	3 ½	92	4	100	4 ½	114	4 ½	116	4 ¾	119	4 ¾	120
6	150	F550171A	4 ½	116	5	125	5 ¾	145	5 ¾	146	5 ¾	148	6	150
8	200	F550172A	6	152	6 ¾	161	7	176	7	178	7 ¾	181	7 ¾	183
10	250	F550173A	8	203	8 ½	215	9	224	9	226	9	228	9	230
12	300	F550174A	10	254	10 ½	266	11 ¾	284	11 ½	290	11 ½	295	11 ¾	297
16	400	F550175A	12	305	12 ½	315	13 ½	345	14	352	14 ¾	358	14 ¾	360
20	500	F550176A	16	406	16 ¾	413	18	460	18 ¾	475	19	479	19	484

The actual diameter of these hoses may differ slightly from the nominal diameter specified in this chart to make sure that they can be properly assembled with the couplings. For diameter tolerance questions please contact us, or your distributor.

The OROFLEX RELINE hose is fully approved for potable water. NSF (National Sanitation Foundation) certifies that the OROFLEX RELINE hose conforms to the requirements of NSF/ANSI/CAN Standard 61- Drinking Water System Components- Health Effects.

The OROFLEX RELINE hose meets the requirements of the Water Regulations Approval Scheme (WRAS) Tests on Water Quality / BS 6920:2014 / Cold Water Use.

Only products bearing the NSF Mark are Certified.



tipsa: reserves the right to modify any specification without prior notice to meet or exceed changing standards. Customers are advised that special diameters or construction characteristics can be produced upon special request. Contact your local dealer or TIPSA at: tipsaex@tipsa.com

